

Silane, dimethyl(1-phenylpropoxy)pentyl-oxo-

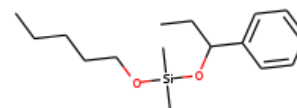
InChI: InChI=1S/C16H28O2Si/c1-5-7-11-14-17-19(3,4)18-16(6-2)15-12-9-8-10-13-15/h8-10,12-13,16H,5-7,11,14H2,1-4H3

InChI Key: ATFCPPODZDGFHBH-UHFFFAOYSA-N

Formula: C16H28O2Si

SMILES: CCCCCO[Si](C)(C)OC(CC)c1ccccc1

Molecular Weight: 280.48



Physical Properties

Property	Value	Unit	Source
$\log P_{\text{oct/wat}}$	5.063		Crippen Method

Sources

NIST Webbook: [http://webbook.nist.gov/cgi/inchi/InChI=1S/C16H28O2Si/c1-5-7-11-14-17-19\(3,4\)18-16\(6-2\)15-12-9-8-10-13-15/h8-10,12-13,16H,5-7,11,14H2,1-4H3](http://webbook.nist.gov/cgi/inchi/InChI=1S/C16H28O2Si/c1-5-7-11-14-17-19(3,4)18-16(6-2)15-12-9-8-10-13-15/h8-10,12-13,16H,5-7,11,14H2,1-4H3)

Crippen Method: <http://pubs.acs.org/doi/abs/10.1021/ci9903071>

Legend

$\log P_{\text{oct/wat}}$: Octanol/Water partition coefficient .

Latest version available from:

<https://www.cheméo.com/cid/10-049-6/Silane%2C%20dimethyl%281-phenylpropoxy%29pentyl-oxo->

Generated by Cheméo on Sat, 16 Feb 2019 01:37:00 +0000.

Cheméo (<https://www.cheméo.com>) is the biggest free database of chemical and physical data for the process industry.