

1,3-Diphthalimido-propane

InChI: InChI=1S/C19H14N2O4/c22-16-12-6-1-2-7-13(12)17(23)20(16)10-5-11-21-18(24)14-8-3-4-9-15(14)19(21)25/h1-4,6-9H,5,10-11H2

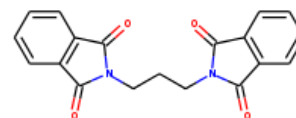
InChI Key: IPPRCFUEIHNCOU-UHFFFAOYSA-N

Formula: C₁₉H₁₄N₂O₄

SMILES: O=C1c2ccccc2C(=O)N1CCCN1C(=O)c2ccccc2C1=O

Molecular Weight: 334.33

CAS: 10513-96-9



Physical Properties

Property	Value	Unit	Source
$\log P_{\text{oct/wat}}$	1.97		Crippen Method

Sources

NIST Webbook: [http://webbook.nist.gov/cgi/inchi/InChI=1S/C19H14N2O4/c22-16-12-6-1-2-7-13\(12\)17\(23\)20\(16\)10-5-11-21-18\(24\)14-8-3-4-9-15\(14\)19\(21\)25/h1-4,6-9H,5,10-11H2](http://webbook.nist.gov/cgi/inchi/InChI=1S/C19H14N2O4/c22-16-12-6-1-2-7-13(12)17(23)20(16)10-5-11-21-18(24)14-8-3-4-9-15(14)19(21)25/h1-4,6-9H,5,10-11H2)

Crippen Method: <http://pubs.acs.org/doi/abs/10.1021/ci9903071>

Legend

$\log P_{\text{oct/wat}}$: Octanol/Water partition coefficient .

Latest version available from:

<https://www.cheméo.com/cid/10-292-6/1%2C3-Diphthalimido-propane>

Generated by Cheméo on Thu, 19 Sep 2019 15:09:18 +0000.

Cheméo (<https://www.cheméo.com>) is the biggest free database of chemical and physical data for the process industry.