

2-Dimethyloctylsilyloxyoct-3-ene

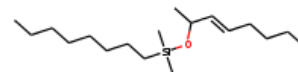
InChI: InChI=1S/C18H38OSi/c1-6-8-10-12-13-15-17-20(4,5)19-18(3)16-14-11-9-7-2/h14,16,18H,6-13,15,17H2,1-5H3/b16-14+

InChI Key: GZUNSJGDFQGXXKJ-JQIJEIRASA-N

Formula: C18H38OSi

SMILES: CCCCC=CC(C)O[Si](C)(C)CCCCCCCC

Molecular Weight: 298.58



Physical Properties

Property	Value	Unit	Source
$\log P_{\text{oct/wat}}$	6.70		Crippen Method

Sources

NIST Webbook: [http://webbook.nist.gov/cgi/inchi/InChI=1S/C18H38OSi/c1-6-8-10-12-13-15-17-20\(4,5\)19-18\(3\)16-14-11-9-7-2/h14,16,18H,6-13,15,17H2,1-5H3/b16-14+](http://webbook.nist.gov/cgi/inchi/InChI=1S/C18H38OSi/c1-6-8-10-12-13-15-17-20(4,5)19-18(3)16-14-11-9-7-2/h14,16,18H,6-13,15,17H2,1-5H3/b16-14+)

Crippen Method: <http://pubs.acs.org/doi/abs/10.1021/ci9903071>

Legend

$\log P_{\text{oct/wat}}$: Octanol/Water partition coefficient .

Latest version available from:

<https://www.cheméo.com/cid/10-348-4/2-Dimethyloctylsilyloxyoct-3-ene>

Generated by Cheméo on Tue, 17 Sep 2019 22:59:32 +0000.

Cheméo (<https://www.cheméo.com>) is the biggest free database of chemical and physical data for the process industry.