

Silane, diphenylethoxy(pent-4-en-2-yloxy)-

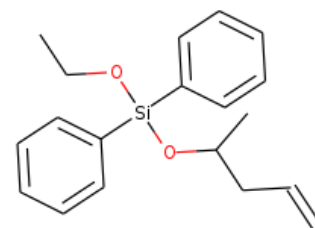
InChI: InChI=1S/C19H24O2Si/c1-4-12-17(3)21-22(20-5-2,18-13-8-6-9-14-18)19-15-10-7-11-16-19/h4,6-11,13-17H,1,5,12H2,2-3H3

InChI Key: MYZVRNBPOOXYSV-UHFFFAOYSA-N

Formula: C₁₉H₂₄O₂Si

SMILES: C=CCC(C)O[Si](OCC)(c1ccccc1)c1ccccc1

Molecular Weight: 312.48



Physical Properties

Property	Value	Unit	Source
$\log P_{\text{oct/wat}}$	3.261		Crippen Method

Sources

NIST Webbook: [http://webbook.nist.gov/cgi/inchi/InChI=1S/C19H24O2Si/c1-4-12-17\(3\)21-22\(20-5-2,18-13-8-6-9-14-18\)19-15-10-7-11-16-19/h4,6-11,13-17H,1,5,12H2,2-3H3](http://webbook.nist.gov/cgi/inchi/InChI=1S/C19H24O2Si/c1-4-12-17(3)21-22(20-5-2,18-13-8-6-9-14-18)19-15-10-7-11-16-19/h4,6-11,13-17H,1,5,12H2,2-3H3)

Crippen Method: <http://pubs.acs.org/doi/abs/10.1021/ci9903071>

Legend

$\log P_{\text{oct/wat}}$: Octanol/Water partition coefficient .

Latest version available from:

<https://www.cheméo.com/cid/10-696-8/Silane%2C%20diphenylethoxy%28pent-4-en-2-yloxy%29->

Generated by Cheméo on Mon, 19 Nov 2018 11:58:40 +0000.

Cheméo (<https://www.cheméo.com>) is the biggest free database of chemical and physical data for the process industry.