

# Silane, dimethyl(3-methylpentylloxy)octyloxy-

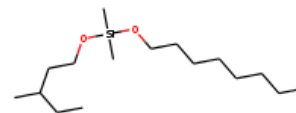
**InChI:** InChI=1S/C16H36O2Si/c1-6-8-9-10-11-12-14-17-19(4,5)18-15-13-16(3)7-2/h16H,6-15H2,1-5H3

**InChI Key:** RNNAICUCIDJFLV-UHFFFAOYSA-N

**Formula:** C16H36O2Si

**SMILES:** CCCCCCO[Si](C)(C)OCCC(C)CC

**Molecular Weight:** 288.54



## Physical Properties

Property	Value	Unit	Source
$\log P_{\text{oct/wat}}$	5.52		Crippen Method

## Sources

**NIST Webbook:** [http://webbook.nist.gov/cgi/inchi/InChI=1S/C16H36O2Si/c1-6-8-9-10-11-12-14-17-19\(4,5\)18-15-13-16\(3\)7-2/h16H,6-15H2,1-5H3](http://webbook.nist.gov/cgi/inchi/InChI=1S/C16H36O2Si/c1-6-8-9-10-11-12-14-17-19(4,5)18-15-13-16(3)7-2/h16H,6-15H2,1-5H3)

**Crippen Method:** <http://pubs.acs.org/doi/abs/10.1021/ci9903071>

## Legend

$\log P_{\text{oct/wat}}$ : Octanol/Water partition coefficient .

Latest version available from:

<https://www.cheméo.com/cid/10-882-1/Silane%2C%20dimethyl%283-methylpentylloxy%29octyloxy->

Generated by Cheméo on Sun, 20 Oct 2019 06:18:58 +0000.

**Cheméo** (<https://www.cheméo.com>) is the biggest free database of chemical and physical data for the process industry.