

Silane, diethyl(3,5-dimethylphenoxy)hexadecyloxy-

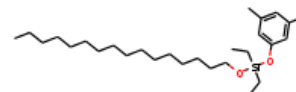
InChI: InChI=1S/C28H52O2Si/c1-6-9-10-11-12-13-14-15-16-17-18-19-20-21-22-29-31(7-2,8-3)30-28-24-26(4)23-27(5)25-28/h23-25H,6-22H2,1-5H3

InChI Key: ALBQCFQKCMRXEV-UHFFFAOYSA-N

Formula: C28H52O2Si

SMILES: CCCCCCCCCCCCCCCCCO[Si](CC)(CC)Oc1cc(C)cc(C)c1

Molecular Weight: 448.80



Physical Properties

Property	Value	Unit	Source
$\log P_{\text{oct/wat}}$	9.66		Crippen Method

Sources

NIST Webbook: [http://webbook.nist.gov/cgi/inchi/InChI=1S/C28H52O2Si/c1-6-9-10-11-12-13-14-15-16-17-18-19-20-21-22-29-31\(7-2,8-3\)30-28-24-26\(4\)23-27\(5\)25-28/h23-25H,6-22H2,1-5H3](http://webbook.nist.gov/cgi/inchi/InChI=1S/C28H52O2Si/c1-6-9-10-11-12-13-14-15-16-17-18-19-20-21-22-29-31(7-2,8-3)30-28-24-26(4)23-27(5)25-28/h23-25H,6-22H2,1-5H3)

Crippen Method: <http://pubs.acs.org/doi/abs/10.1021/ci9903071>

Legend

$\log P_{\text{oct/wat}}$: Octanol/Water partition coefficient .

Latest version available from:

<https://www.cheméo.com/cid/13-633-4/Silane%2C%20diethyl%283%2C5-dimethylphenoxy%29hexadecyloxy->

Generated by Cheméo on Sat, 23 Oct 2021 21:33:37 +0000.

Cheméo (<https://www.cheméo.com>) is the biggest free database of chemical and physical data for the process industry.