

# Silane, chlorodiethyl(2-ethylphenoxy)-

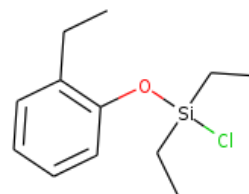
**InChI:** InChI=1S/C12H19ClOSi/c1-4-11-9-7-8-10-12(11)14-15(13,5-2)6-3/h7-10H,4-6H2,1-3H3

**InChI Key:** BMZQUQORXFBECT-UHFFFAOYSA-N

**Formula:** C12H19ClOSi

**SMILES:** CCc1ccccc1O[Si](Cl)(CC)CC

**Molecular Weight:** 242.82



## Physical Properties

Property	Value	Unit	Source
$\log P_{\text{oct/wat}}$	4.35		Crippen Method

## Sources

**NIST Webbook:** [http://webbook.nist.gov/cgi/inchi/InChI=1S/C12H19ClOSi/c1-4-11-9-7-8-10-12\(11\)14-15\(13,5-2\)6-3/h7-10H,4-6H2,1-3H3](http://webbook.nist.gov/cgi/inchi/InChI=1S/C12H19ClOSi/c1-4-11-9-7-8-10-12(11)14-15(13,5-2)6-3/h7-10H,4-6H2,1-3H3)

**Crippen Method:** <http://pubs.acs.org/doi/abs/10.1021/ci9903071>

## Legend

$\log P_{\text{oct/wat}}$ : Octanol/Water partition coefficient .

Latest version available from:

<https://www.cheméo.com/cid/24-907-8/Silane%2C%20chlorodiethyl%282-ethylphenoxy%29->

Generated by Cheméo on Tue, 18 May 2021 02:14:45 +0000.

**Cheméo** (<https://www.cheméo.com>) is the biggest free database of chemical and physical data for the process industry.