

# 20«beta»-Dihydropregnenolone, MO-TMS

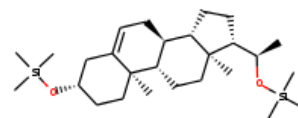
**InChI:** InChI=1S/C27H50O2Si2/c1-19(28-30(4,5)6)23-12-13-24-22-11-10-20-18-21(29-31(7,8)9)14-16-26(20,2)25(22)15-17-27(23,24)3/h10,19,21-25H,11-18H2,1-9H3/t19-,21+,22+,23-,24+,25+,26+,27-/m0/s1

**InChI Key:** PXQKWIRLXRMAD-HFRBDLMJSA-N

**Formula:** C<sub>27</sub>H<sub>50</sub>O<sub>2</sub>Si<sub>2</sub>

**SMILES:** CC(O[Si](C)(C)C)C1CCC2C3CC=C4CC(O[Si](C)(C)C)CCC4(C)C3CCC12C

**Molecular Weight:** 462.86



## Physical Properties

Property	Value	Unit	Source
$\log P_{\text{oct/wat}}$	8.03		Crippen Method

## Sources

**NIST Webbook:** [http://webbook.nist.gov/cgi/inchi/InChI=1S/C27H50O2Si2/c1-19\(28-30\(4,5\)6\)23-12-13-24-22-11-10-20-18-21\(29-31\(7,8\)9\)14-16-26\(20,2\)25\(22\)15-17-27\(23,24\)3/h10,19,21-25H,11-18H2,1-9H3/t19-,21+,22+,23-,24+,25+,26+,27-/m0/s1](http://webbook.nist.gov/cgi/inchi/InChI=1S/C27H50O2Si2/c1-19(28-30(4,5)6)23-12-13-24-22-11-10-20-18-21(29-31(7,8)9)14-16-26(20,2)25(22)15-17-27(23,24)3/h10,19,21-25H,11-18H2,1-9H3/t19-,21+,22+,23-,24+,25+,26+,27-/m0/s1)

**Crippen Method:** <http://pubs.acs.org/doi/abs/10.1021/ci9903071>

## Legend

$\log P_{\text{oct/wat}}$ : Octanol/Water partition coefficient .

Latest version available from:

<https://www.cheméo.com/cid/26-268-6/20%C2%ABbeta%C2%BB-Dihydropregnenolone%2C%20MO-TMS>

Generated by Cheméo on Sun, 20 Jun 2021 10:02:15 +0000.

**Cheméo** (<https://www.cheméo.com>) is the biggest free database of chemical and physical data for the process industry.