

Copper (II) formate tetrahydrate

InChI: InChI=1S/2CH2O2.Cu.4H2O/c2*2-1-3;;;;;/h2*1H,(H,2,3);;4*1H2/q;;+2;;;;/p-2

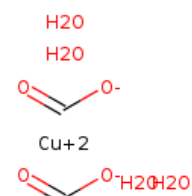
InChI Key: LSIWWRSSSOYIMS-UHFFFAOYSA-L

Formula: C2H2CuO4.H8O4

SMILES: O.O.O.O.[Cu+2].O=C[O-].O=C[O-]

Molecular Weight: 225.64

CAS: 5893-61-8



Temperature Dependent Properties

Property	Value	Unit	Temperature (K)	Source
C _{p,solid}	290.20	J/molxK	295.47	NIST Webbook

Sources

NIST Webbook: [http://webbook.nist.gov/cgi/inchi/InChI=1S/2CH2O2.Cu.4H2O/c2*2-1-3;;;;;/h2*1H,\(H,2,3\);;4*1H2/q;;+2;;;;/p-2](http://webbook.nist.gov/cgi/inchi/InChI=1S/2CH2O2.Cu.4H2O/c2*2-1-3;;;;;/h2*1H,(H,2,3);;4*1H2/q;;+2;;;;/p-2)

Legend

C_{p,solid}: Solid phase heat capacity (J/molxK).

Latest version available from:

<https://old.cheméo.com/cid/26-464-8/Copper%20%28II%29%20formate%20tetrahydrate>

Generated by Cheméo on Mon, 08 Aug 2022 22:09:52 +0000.

Cheméo (<https://www.cheméo.com>) is the biggest free database of chemical and physical data for the process industry.