

# 1-(Dichloromethyl)dimethylsilyloxytridec-2-yne

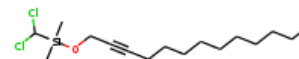
**InChI:** InChI=1S/C16H30Cl2OSi/c1-4-5-6-7-8-9-10-11-12-13-14-15-19-20  
(2,3)16(17)18/h16H,4-12,15H2,1-3H3

**InChI Key:** AUOBOAMSTQBUHD-UHFFFAOYSA-N

**Formula:** C16H30Cl2OSi

**SMILES:** CCCCCCCCCC#CCO[Si](C)(C)C(Cl)Cl

**Molecular Weight:** 337.40



## Physical Properties

Property	Value	Unit	Source
$\log P_{\text{oct/wat}}$	6.09		Crippen Method

## Sources

**NIST Webbook:** [http://webbook.nist.gov/cgi/inchi/InChI=1S/C16H30Cl2OSi/c1-4-5-6-7-8-9-10-11-12-13-14-15-19-20\(2,3\)16\(17\)18/h16H,4-12,15H2,1-3H3](http://webbook.nist.gov/cgi/inchi/InChI=1S/C16H30Cl2OSi/c1-4-5-6-7-8-9-10-11-12-13-14-15-19-20(2,3)16(17)18/h16H,4-12,15H2,1-3H3)

**Crippen Method:** <http://pubs.acs.org/doi/abs/10.1021/ci9903071>

## Legend

$\log P_{\text{oct/wat}}$ : Octanol/Water partition coefficient .

Latest version available from:

<https://www.cheméo.com/cid/27-242-3/1-%28Dichloromethyl%29dimethylsilyloxytridec-2-yne>

Generated by Cheméo on Thu, 17 Oct 2019 01:24:49 +0000.

**Cheméo** (<https://www.cheméo.com>) is the biggest free database of chemical and physical data for the process industry.