

GLUCOSE (MEOX 5TMS)-1

Other names: Glucose, 1-MO, 5TMS, BP.

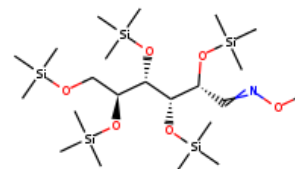
InChI: InChI=1S/C22H55NO6Si5/c1-24-23-17-19(26-31(5,6)7)21(28-33(11,12)13)22(29-34(14,15)16)20(27-32(8,9)10)18-25-30(2,3)4/h17,19-22H,18H2,1-16H3/t19-,20+,21+,22+/m0/s1

InChI Key: LLVFXXKDPAPSCJ-DXBBTUNJSA-N

Formula: C22H55NO6Si5

SMILES: CON=CC(O[Si](C)(C)C)C(O[Si](C)(C)C)C(O[Si](C)(C)C)C(CO[Si](C)(C)C)O[Si](C)(C)C

Molecular Weight: 570.10



Physical Properties

| Property | Value | Unit | Source |
|---------------------------|-------|------|----------------|
| $\log P_{\text{oct/wat}}$ | 6.35 | | Crippen Method |

Sources

NIST Webbook: [http://webbook.nist.gov/cgi/inchi/InChI=1S/C22H55NO6Si5/c1-24-23-17-19\(26-31\(5,6\)7\)21\(28-33\(11,12\)13\)22\(29-34\(14,15\)16\)20\(27-32\(8,9\)10\)18-25-30\(2,3\)4/h17,19-22H,18H2,1-16H3/t19-,20+,21+,22+/m0/s1](http://webbook.nist.gov/cgi/inchi/InChI=1S/C22H55NO6Si5/c1-24-23-17-19(26-31(5,6)7)21(28-33(11,12)13)22(29-34(14,15)16)20(27-32(8,9)10)18-25-30(2,3)4/h17,19-22H,18H2,1-16H3/t19-,20+,21+,22+/m0/s1)

Crippen Method: <http://pubs.acs.org/doi/abs/10.1021/ci9903071>

Legend

$\log P_{\text{oct/wat}}$: Octanol/Water partition coefficient .

Latest version available from:

<https://www.cheméo.com/cid/31-394-0/GLUCOSE%20%28MEOX%205TMS%29-1>

Generated by Cheméo on Tue, 19 Jan 2021 00:02:34 +0000.

Cheméo (<https://www.cheméo.com>) is the biggest free database of chemical and physical data for the process industry.