

# Tryptophan, methyl, 2-PFP

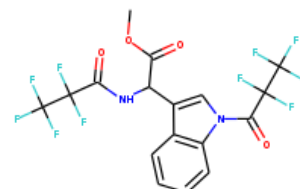
**InChI:** InChI=1S/C17H10F10N2O4/c1-33-11(30)10(28-12(31)14(18,19)16(22,23)24)8-6-29(9-5-3-2-4-7(8)9)13(32)15(20,21)17(25,26)27/h2-6,10H,1H3,(H,28,31)

**InChI Key:** AOAGFUVREFGYJI-UHFFFAOYSA-N

**Formula:** C17H10F10N2O4

**SMILES:** COC(=O)C(NC(=O)C(F)(F)C(F)(F)F)c1cn(C(=O)C(F)(F)C(F)(F)F)c2ccccc12

**Molecular Weight:** 496.26



## Physical Properties

Property	Value	Unit	Source
$\log P_{\text{oct/wat}}$	4.007		Crippen Method

## Sources

**NIST Webbook:** [http://webbook.nist.gov/cgi/inchi/InChI=1S/C17H10F10N2O4/c1-33-11\(30\)10\(28-12\(31\)14\(18,19\)16\(22,23\)24\)8-6-29\(9-5-3-2-4-7\(8\)9\)13\(32\)15\(20,21\)17\(25,26\)27/h2-6,10H,1H3,\(H,28,31\)](http://webbook.nist.gov/cgi/inchi/InChI=1S/C17H10F10N2O4/c1-33-11(30)10(28-12(31)14(18,19)16(22,23)24)8-6-29(9-5-3-2-4-7(8)9)13(32)15(20,21)17(25,26)27/h2-6,10H,1H3,(H,28,31))

**Crippen Method:** <http://pubs.acs.org/doi/abs/10.1021/ci9903071>

## Legend

$\log P_{\text{oct/wat}}$ : Octanol/Water partition coefficient .

Latest version available from:

<https://www.cheméo.com/cid/35-010-1/Tryptophan%2C%20methyl%2C%202-PFP>

Generated by Cheméo on Sat, 16 Feb 2019 01:01:18 +0000.

**Cheméo** (<https://www.cheméo.com>) is the biggest free database of chemical and physical data for the process industry.