

Allyl alcohol, benzyldimethylsilyl ether

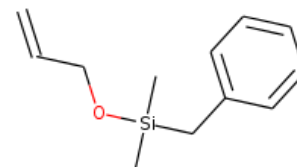
InChI: InChI=1S/C12H18OSi/c1-4-10-13-14(2,3)11-12-8-6-5-7-9-12/h4-9
H,1,10-11H2,2-3H3

InChI Key: AOUQLMDPHGRUNE-UHFFFAOYSA-N

Formula: C12H18OSi

SMILES: C=CCO[Si](C)(C)Cc1ccccc1

Molecular Weight: 206.36



Physical Properties

Property	Value	Unit	Source
$\log P_{\text{oct/wat}}$	3.18		Crippen Method

Sources

NIST Webbook: [http://webbook.nist.gov/cgi/inchi/InChI=1S/C12H18OSi/c1-4-10-13-14\(2,3\)11-12-8-6-5-7-9-12/h4-9H,1,10-11H2,2-3H3](http://webbook.nist.gov/cgi/inchi/InChI=1S/C12H18OSi/c1-4-10-13-14(2,3)11-12-8-6-5-7-9-12/h4-9H,1,10-11H2,2-3H3)

Crippen Method: <http://pubs.acs.org/doi/abs/10.1021/ci9903071>

Legend

$\log P_{\text{oct/wat}}$: Octanol/Water partition coefficient .

Latest version available from:

<https://www.cheméo.com/cid/35-065-1/Allyl%20alcohol%2C%20benzyldimethylsilyl%20ether>

Generated by Cheméo on Thu, 02 Dec 2021 03:40:38 +0000.

Cheméo (<https://www.cheméo.com>) is the biggest free database of chemical and physical data for the process industry.