

# Silane, dimethyl(3-methylpentylloxy)heptyloxy-

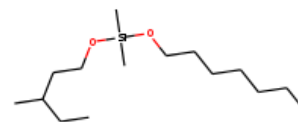
**InChI:** InChI=1S/C15H34O2Si/c1-6-8-9-10-11-13-16-18(4,5)17-14-12-15(3)7-2/h15H,6-14H2,1-5H3

**InChI Key:** KRGAPQVKWPQGBW-UHFFFAOYSA-N

**Formula:** C15H34O2Si

**SMILES:** CCCCCCO[Si](C)(C)OCCC(C)CC

**Molecular Weight:** 274.51



## Physical Properties

Property	Value	Unit	Source
$\log P_{\text{oct/wat}}$	5.13		Crippen Method

## Sources

**NIST Webbook:** [http://webbook.nist.gov/cgi/inchi/InChI=1S/C15H34O2Si/c1-6-8-9-10-11-13-16-18\(4,5\)17-14-12-15\(3\)7-2/h15H,6-14H2,1-5H3](http://webbook.nist.gov/cgi/inchi/InChI=1S/C15H34O2Si/c1-6-8-9-10-11-13-16-18(4,5)17-14-12-15(3)7-2/h15H,6-14H2,1-5H3)

**Crippen Method:** <http://pubs.acs.org/doi/abs/10.1021/ci9903071>

## Legend

$\log P_{\text{oct/wat}}$ : Octanol/Water partition coefficient .

Latest version available from:

<https://www.cheméo.com/cid/35-074-1/Silane%2C%20dimethyl%283-methylpentylloxy%29heptyloxy->

Generated by Cheméo on Tue, 17 Sep 2019 23:26:01 +0000.

**Cheméo** (<https://www.cheméo.com>) is the biggest free database of chemical and physical data for the process industry.