

GA20-Open lactone-1(10)-ene, Me-TMS

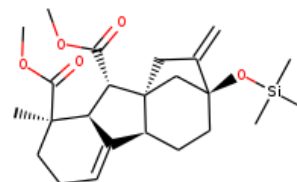
InChI: InChI=1S/C24H36O5Si/c1-15-13-23-14-24(15,29-30(5,6)7)12-10-17(23)16-9-8-11-22(2,21(26)28-4)18(16)19(23)20(25)27-3/h9,17-19H,1,8,10-14H2,2-7H3/t17-,18+,19+,22+,23-,24-/m1/s1

InChI Key: XQRPEXKQKURYHE-JNRLCXJYSA-N

Formula: C₂₄H₃₆O₅Si

SMILES: C=C1CC23CC1(O[Si](C)(C)C)CCC2C1=CCCC(C)(C(=O)OC)C1C3C(=O)OC

Molecular Weight: 432.63



Physical Properties

Property	Value	Unit	Source
$\log P_{\text{oct/wat}}$	4.64		Crippen Method

Sources

NIST Webbook: [http://webbook.nist.gov/cgi/inchi/InChI=1S/C24H36O5Si/c1-15-13-23-14-24\(15,29-30\(5,6\)7\)12-10-17\(23\)16-9-8-11-22\(2,21\(26\)28-4\)18\(16\)19\(23\)20\(25\)27-3/h9,17-19H,1,8,10-14H2,2-7H3/t17-,18+,19+,22+,23-,24-/m1/s1](http://webbook.nist.gov/cgi/inchi/InChI=1S/C24H36O5Si/c1-15-13-23-14-24(15,29-30(5,6)7)12-10-17(23)16-9-8-11-22(2,21(26)28-4)18(16)19(23)20(25)27-3/h9,17-19H,1,8,10-14H2,2-7H3/t17-,18+,19+,22+,23-,24-/m1/s1)

Crippen Method: <http://pubs.acs.org/doi/abs/10.1021/ci9903071>

Legend

$\log P_{\text{oct/wat}}$: Octanol/Water partition coefficient .

Latest version available from:

<https://www.cheméo.com/cid/35-271-2/GA20-Open%20lactone-1%2810%29-ene%2C%20Me-TMS>

Generated by Cheméo on Fri, 20 Sep 2019 11:47:20 +0000.

Cheméo (<https://www.cheméo.com>) is the biggest free database of chemical and physical data for the process industry.