

# Silane, [[(3.beta.)-lanosta-8,24-dien-3-yl]oxy]trimethyl-

**Other names:** 3-[(Trimethylsilyl)oxy]lanosta-8,24-diene, (3«beta»)-; Lanosta-8,24-diene, 3-[(trimethylsilyl)oxy], (3«beta»)-; Lanosterol, TMS; Lanosterol, tms derivative.

**InChI:** InChI=1S/C33H58OSi/c1-23(2)13-12-14-24(3)25-17-21-33(8)27-15-16-28-30(4,5)29(34-35(9,10)11)19-20-31(28,6)26(27)18-22-32(25,33)7/h13,24-25,28-29H,12,14-22H2,1-11H3

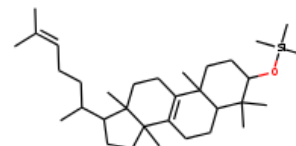
**InChI Key:** VUPPLGLOGXZZKA-UHFFFAOYSA-N

**Formula:** C<sub>33</sub>H<sub>58</sub>OSi

**SMILES:** CC(C)=CCCC(C)C1CCC2(C)C3=C(CCC12C)C1(C)CCC(O[Si](C)(C)C)C(C)(C)C1CC3

**Molecular Weight:** 498.90

**CAS:** 55493-84-0



## Physical Properties

Property	Value	Unit	Source
$\log P_{\text{oct/wat}}$	10.34		Crippen Method

## Sources

**NIST Webbook:** [http://webbook.nist.gov/cgi/inchi/InChI=1S/C33H58OSi/c1-23\(2\)13-12-14-24\(3\)25-17-21-33\(8\)27-15-16-28-30\(4,5\)29\(34-35\(9,10\)11\)19-20-31\(28,6\)26\(27\)18-22-32\(25,33\)7/h13,24-25,28-29H,12,14-22H2,1-11H3](http://webbook.nist.gov/cgi/inchi/InChI=1S/C33H58OSi/c1-23(2)13-12-14-24(3)25-17-21-33(8)27-15-16-28-30(4,5)29(34-35(9,10)11)19-20-31(28,6)26(27)18-22-32(25,33)7/h13,24-25,28-29H,12,14-22H2,1-11H3)

**Crippen Method:** <http://pubs.acs.org/doi/abs/10.1021/ci9903071>

## Legend

$\log P_{\text{oct/wat}}$ : Octanol/Water partition coefficient .

Latest version available from:

<https://www.cheméo.com/cid/60-438-9/Silane%2C%20%5B%5B%283.beta.%29-lanosta-8%2C24-dien-3-yl%5Doxy%5Dtrimethyl->

Generated by Cheméo on Fri, 16 Apr 2021 00:49:40 +0000.

**Cheméo** (<https://www.cheméo.com>) is the biggest free database of chemical and physical data for the process industry.