

Silane, dimethyldecyloxyoctadecyloxy-

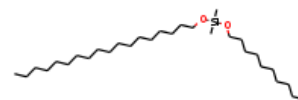
InChI: InChI=1S/C30H64O2Si/c1-5-7-9-11-13-15-16-17-18-19-20-21-22-24-26-28-30-32-33(3,4)31-29-27-25-23-14-12-10-8-6-2/h5-30H2,1-4H3

InChI Key: LNEFQXOFGVREJH-UHFFFAOYSA-N

Formula: C30H64O2Si

SMILES: CCCCCCCCCCCCCCCCCO[Si](C)(C)OCCCCCCCCC

Molecular Weight: 484.91



Physical Properties

Property	Value	Unit	Source
$\log P_{\text{oct/wat}}$	11.12		Crippen Method

Sources

NIST Webbook: [http://webbook.nist.gov/cgi/inchi/InChI=1S/C30H64O2Si/c1-5-7-9-11-13-15-16-17-18-19-20-21-22-24-26-28-30-32-33\(3,4\)31-29-27-25-23-14-12-10-8-6-2/h5-30H2,1-4H3](http://webbook.nist.gov/cgi/inchi/InChI=1S/C30H64O2Si/c1-5-7-9-11-13-15-16-17-18-19-20-21-22-24-26-28-30-32-33(3,4)31-29-27-25-23-14-12-10-8-6-2/h5-30H2,1-4H3)

Crippen Method: <http://pubs.acs.org/doi/abs/10.1021/ci9903071>

Legend

$\log P_{\text{oct/wat}}$: Octanol/Water partition coefficient .

Latest version available from:

<https://www.cheméo.com/cid/61-992-3/Silane%2C%20dimethyldecyloxyoctadecyloxy->

Generated by Cheméo on Thu, 17 Oct 2019 07:54:55 +0000.

Cheméo (<https://www.cheméo.com>) is the biggest free database of chemical and physical data for the process industry.