

# Silane, dimethyl(pentafluorobenzyloxy)propoxy-

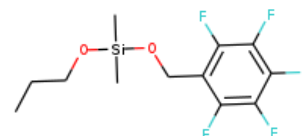
**InChI:** InChI=1S/C12H15F5O2Si/c1-4-5-18-20(2,3)19-6-7-8(13)10(15)12(17)11(16)9(7)14/h4-6H2,1-3H3

**InChI Key:** KMGKICJAUTYESY-UHFFFAOYSA-N

**Formula:** C12H15F5O2Si

**SMILES:** CCCO[Si](C)(C)OCc1c(F)c(F)c(F)c(F)c1F

**Molecular Weight:** 314.32



## Physical Properties

| Property                  | Value | Unit | Source         |
|---------------------------|-------|------|----------------|
| $\log P_{\text{oct/wat}}$ | 4.03  |      | Crippen Method |

## Sources

**NIST Webbook:** [http://webbook.nist.gov/cgi/inchi/InChI=1S/C12H15F5O2Si/c1-4-5-18-20\(2,3\)19-6-7-8\(13\)10\(15\)12\(17\)11\(16\)9\(7\)14/h4-6H2,1-3H3](http://webbook.nist.gov/cgi/inchi/InChI=1S/C12H15F5O2Si/c1-4-5-18-20(2,3)19-6-7-8(13)10(15)12(17)11(16)9(7)14/h4-6H2,1-3H3)

**Crippen Method:** <http://pubs.acs.org/doi/abs/10.1021/ci9903071>

## Legend

$\log P_{\text{oct/wat}}$ : Octanol/Water partition coefficient .

Latest version available from:

<https://www.cheméo.com/cid/85-550-7/Silane%2C%20dimethyl%28pentafluorobenzyloxy%29propoxy->

Generated by Cheméo on Sun, 18 Apr 2021 09:16:46 +0000.

**Cheméo** (<https://www.cheméo.com>) is the biggest free database of chemical and physical data for the process industry.