

# 1,1'-Biphenyl, 2',3,4,5,5'-Pentachloro-

**Other names:** 2,3,4,5,5'-Pentachloro-1,1'-biphenyl; PCB 124.

**InChI:** InChI=1S/C12H5Cl5/c13-7-1-2-9(14)8(5-7)6-3-10(15)12(17)11(16)4-6/h1-5H

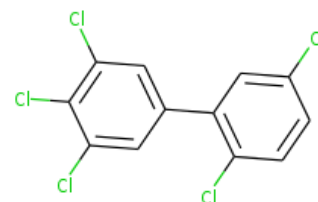
**InChI Key:** PIVBPZFQXKMHBD-UHFFFAOYSA-N

**Formula:** C12H5Cl5

**SMILES:** Clc1ccc(Cl)c(-c2cc(Cl)c(Cl)c(Cl)c2)c1

**Molecular Weight:** 326.43

**CAS:** 70424-70-3



## Physical Properties

Property	Value	Unit	Source
$\Delta_f G^\circ$	167.18	kJ/mol	Joback Method
$\Delta_f H^\circ_{\text{gas}}$	46.00	kJ/mol	Joback Method
$\Delta_{\text{fus}} H^\circ$	33.96	kJ/mol	Joback Method
$\Delta_{\text{vap}} H^\circ$	72.09	kJ/mol	Joback Method
$\log P_{\text{oct/wat}}$	6.62		Crippen Method
$P_c$	2581.96	kPa	Joback Method
$T_{\text{boil}}$	739.37	K	Joback Method
$T_c$	1008.22	K	Joback Method
$T_{\text{fus}}$	490.04	K	Joback Method
$V_c$	0.74	m <sup>3</sup> /kg-mol	Joback Method

## Temperature Dependent Properties

Property	Value	Unit	Temperature (K)	Source
$C_{p,\text{gas}}$	385.50	J/mol×K	739.37	Joback Method
$\eta$	0.00	Paxs	739.37	Joback Method

## Sources

**Joback Method:** [https://en.wikipedia.org/wiki/Joback\\_method](https://en.wikipedia.org/wiki/Joback_method)

**NIST Webbook:** [http://webbook.nist.gov/cgi/inchi/InChI=1S/C12H5Cl5/c13-7-1-2-9\(14\)8\(5-7\)6-3-10\(15\)12\(17\)11\(16\)4-6/h1-5H](http://webbook.nist.gov/cgi/inchi/InChI=1S/C12H5Cl5/c13-7-1-2-9(14)8(5-7)6-3-10(15)12(17)11(16)4-6/h1-5H)

**Crippen Method:** <http://pubs.acs.org/doi/abs/10.1021/ci9903071>

## Legend

$C_{p,gas}$ : Ideal gas heat capacity (J/molxK).

$\eta$ : Dynamic viscosity (Pa $\times$ s).

$\Delta_f G^\circ$ : Standard Gibbs free energy of formation (kJ/mol).

$\Delta_f H^\circ_{gas}$ : Enthalpy of formation at standard conditions (kJ/mol).

$\Delta_{fus} H^\circ$ : Enthalpy of fusion at standard conditions (kJ/mol).

$\Delta_{vap} H^\circ$ : Enthalpy of vaporization at standard conditions (kJ/mol).

$logP_{oct/wat}$ : Octanol/Water partition coefficient .

$P_c$ : Critical Pressure (kPa).

$T_{boil}$ : Normal Boiling Point Temperature (K).

$T_c$ : Critical Temperature (K).

$T_{fus}$ : Normal melting (fusion) point (K).

$V_c$ : Critical Volume (m<sup>3</sup>/kg-mol).

Latest version available from:

<https://www.cheméo.com/cid/93-959-5/1%2C1%27-Biphenyl%2C%20%27%2C3%2C4%2C5%2C5%27-Pentachloro->

Generated by Cheméo on Sat, 18 Sep 2021 01:42:03 +0000.

**Cheméo** (<https://www.cheméo.com>) is the biggest free database of chemical and physical data for the process industry.