

2,2,4,4,6,8,10,12-octamethyl-6,8,10,12-tetra(2-cyanoethyl)-[1,3,5,7,9,11,2,4,6,8,10,12]cyclohexasiloxane

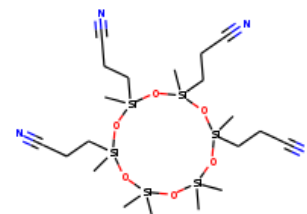
InChI: InChI=1S/C20H40N4O6Si6/c1-31(2)25-32(3,4)27-34(6,18-10-14-22)29-36(8,20-12-16-24)30-35(7,19-11-15-23)28-33(5,26-31)17-9-13-21/h9-12,17-20H2,1-8H3

InChI Key: XERICKMJXYHSMU-UHFFFAOYSA-N

Formula: C₂₀H₄₀N₄O₆Si₆

SMILES: C[Si]1(C)O[Si](C)(C)O[Si](C)(CCC#N)O[Si](C)(CCC#N)O[Si](C)(CCC#N)O[Si](C)(CCC#N)O1

Molecular Weight: 601.07



Physical Properties

Property	Value	Unit	Source
$\log P_{\text{oct/wat}}$	5.45		Crippen Method

Sources

NIST Webbook: [http://webbook.nist.gov/cgi/inchi/InChI=1S/C20H40N4O6Si6/c1-31\(2\)25-32\(3,4\)27-34\(6,18-10-14-22\)29-36\(8,20-12-16-24\)30-35\(7,19-11-15-23\)28-33\(5,26-31\)17-9-13-21/h9-12,17-20H2,1-8H3](http://webbook.nist.gov/cgi/inchi/InChI=1S/C20H40N4O6Si6/c1-31(2)25-32(3,4)27-34(6,18-10-14-22)29-36(8,20-12-16-24)30-35(7,19-11-15-23)28-33(5,26-31)17-9-13-21/h9-12,17-20H2,1-8H3)

Crippen Method: <http://pubs.acs.org/doi/abs/10.1021/ci9903071>

Legend

$\log P_{\text{oct/wat}}$: Octanol/Water partition coefficient .

Latest version available from:

<https://www.cheméo.com/cid/80-421-5/2%2C2%2C4%2C4%2C6%2C8%2C10%2C12-octamethyl-6%2C8%2C10%2C12-tetra%282-cyanoethyl%29-%5B1%2C3%2C5%2C7%2C9%2C11%2C2%2C4%2C6%2C8%2C10%2C12%5Dcyclohexasiloxane>

Generated by Cheméo on Tue, 18 May 2021 02:31:52 +0000.

Cheméo (<https://www.cheméo.com>) is the biggest free database of chemical and physical data for the process industry.