

Silane, diphenyl(3-ethylphenoxy)hexyloxy-

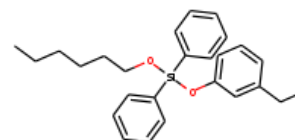
InChI: InChI=1S/C26H32O2Si/c1-3-5-6-13-21-27-29(25-17-9-7-10-18-25,26-19-11-8-12-20-26)28-24-16-14-15-23(4-2)22-24/h7-12,14-20,22H,3-6,13,21H2,1-2H3

InChI Key: YFYDNGMQSBIGLQ-UHFFFAOYSA-N

Formula: C26H32O2Si

SMILES: CCCCCCO[Si](Oc1cccc(CC)c1)(c1ccccc1)c1ccccc1

Molecular Weight: 404.62



Physical Properties

| Property | Value | Unit | Source |
|---------------------------|-------|------|----------------|
| $\log P_{\text{oct/wat}}$ | 5.481 | | Crippen Method |

Sources

NIST Webbook: [http://webbook.nist.gov/cgi/inchi/InChI=1S/C26H32O2Si/c1-3-5-6-13-21-27-29\(25-17-9-7-10-18-25,26-19-11-8-12-20-26\)28-24-16-14-15-23\(4-2\)22-24/h7-12,14-20,22H,3-6,13,21H2,1-2H3](http://webbook.nist.gov/cgi/inchi/InChI=1S/C26H32O2Si/c1-3-5-6-13-21-27-29(25-17-9-7-10-18-25,26-19-11-8-12-20-26)28-24-16-14-15-23(4-2)22-24/h7-12,14-20,22H,3-6,13,21H2,1-2H3)

Crippen Method: <http://pubs.acs.org/doi/abs/10.1021/ci9903071>

Legend

$\log P_{\text{oct/wat}}$: Octanol/Water partition coefficient .

Latest version available from:

<https://old.cheméo.com/cid/90-530-3/Silane%2C%20diphenyl%283-ethylphenoxy%29hexyloxy->

Generated by Cheméo on Sun, 26 Jun 2022 20:41:02 +0000.

Cheméo (<https://www.cheméo.com>) is the biggest free database of chemical and physical data for the process industry.